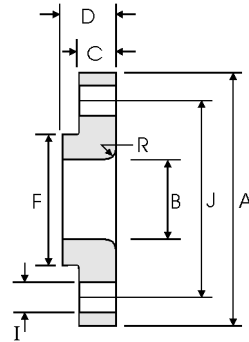
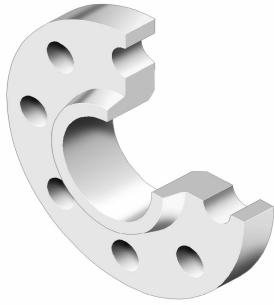


Lap Joint Flanges - ANSI B16.5



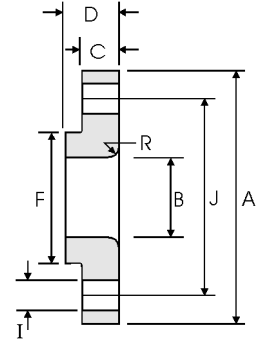
Class 150 lb

Nominal Pipe Size	Pipe	Flange Data				Lap	Hub	Drilling Data			Weight
		A	B	C	D	R	F	H	I	J	
	Outside Diameter	Overall Diameter	Inside Diameter	Flange Thickness min	Overall Length	Lap Radius	Hub Diameter	Number of Holes	Bolt Hole Diameter	Diameter of Circle of Holes	kg/ piece
	in mm	in mm	in mm	in mm	in mm	in mm	in mm		in mm	in mm	
1/2	0.840	3.500	0.900	0.440	0.620	0.120	1.190	4	0.620	2.380	0.38
	21.30	88.90	22.90	11.20	15.70	3.000	30.20		15.70	60.45	
3/4	1.050	3.880	1.110	0.500	0.620	0.120	1.500	4	0.620	2.750	0.55
	26.70	98.60	28.20	12.70	15.70	3.000	38.10		15.70	69.85	
1	1.315	4.250	1.380	0.560	0.690	0.120	1.940	4	0.620	3.120	0.76
	33.40	108.0	35.10	14.20	17.50	3.000	49.30		15.70	79.25	
1 1/4	1.660	4.620	1.720	0.620	0.810	0.190	2.310	4	0.620	3.500	1.01
	42.20	117.3	43.70	15.70	20.60	4.800	58.70		15.70	88.90	
1 1/2	1.900	5.000	1.970	0.690	0.880	0.250	2.560	4	0.620	3.880	1.30
	48.30	127.0	50.00	17.50	22.40	6.400	65.00		15.70	98.60	
2	2.375	6.000	2.460	0.750	1.000	0.310	3.060	4	0.750	4.750	2.03
	60.30	152.4	62.50	19.10	25.40	7.900	77.70		19.10	120.7	
2 1/2	2.875	7.000	2.970	0.880	1.120	0.310	3.560	4	0.750	5.500	3.25
	73.00	177.8	75.40	22.40	28.40	7.900	90.40		19.10	139.7	
3	3.500	7.500	3.600	0.940	1.190	0.380	4.250	4	0.750	6.000	3.81
	88.90	190.5	91.40	23.90	30.20	9.700	108.0		19.10	152.4	
3 1/2	4.000	8.500	4.100	0.940	1.250	0.380	4.810	8	0.750	7.000	4.76
	101.6	215.9	104.1	23.90	31.75	9.700	122.2		19.10	177.8	
4	4.500	9.000	4.600	0.940	1.310	0.440	5.310	8	0.750	7.500	5.25
	114.3	228.6	116.8	23.90	33.30	11.20	134.9		19.10	190.5	
5	5.563	10.00	5.690	0.940	1.440	0.440	6.440	8	0.880	8.500	6.02
	141.3	254.0	114.5	23.90	36.60	11.20	163.6		22.40	215.9	
6	6.625	11.00	6.750	1.000	1.560	0.500	7.560	8	0.880	9.500	7.40
	168.3	279.4	171.5	25.40	39.60	12.70	192.0		22.40	241.3	
8	8.625	13.50	8.750	1.120	1.750	0.500	9.690	8	0.880	11.75	12.1
	219.1	342.9	222.3	28.40	44.50	12.70	246.1		22.40	298.5	
10	10.75	16.00	10.92	1.190	1.940	0.500	12.00	12	1.000	14.25	16.4
	273.0	406.4	277.4	30.20	49.30	12.70	304.8		25.40	362.0	
12	12.75	19.00	12.92	1.250	2.190	0.500	14.38	12	1.000	17.00	26.1
	323.8	482.6	328.2	31.75	55.60	12.70	365.3		25.40	431.8	
14	14.00	21.00	14.18	1.380	3.120	0.500	15.75	12	1.120	18.75	34.5
	355.6	533.4	360.2	35.10	79.25	12.70	400.1		28.40	476.3	
16	16.00	23.50	16.19	1.440	3.440	0.500	18.00	16	1.120	21.25	44.6
	406.4	596.9	411.2	36.60	87.40	12.70	457.2		28.40	539.8	
18	18.00	25.00	18.20	1.560	3.810	0.500	19.88	16	1.250	22.75	48.7
	457.2	635.0	462.3	39.60	96.80	12.70	505.0		31.75	577.9	
20	20.00	27.50	20.25	1.690	4.060	0.500	22.00	20	1.250	25.00	61.6
	508.0	698.5	514.4	42.90	103.1	12.70	558.8		31.75	635.0	
24	24.00	32.00	24.25	1.880	4.380	0.500	26.12	20	1.380	29.50	86.6
	609.6	812.8	616.0	47.80	111.3	12.70	663.4		35.10	749.3	

Notes

- Weights are based on manufacturer's data and are approximate.
- For tolerances see page 8-4.

Lap Joint Flanges - ANSI B16.5



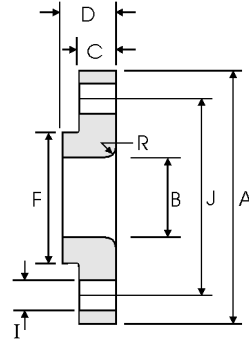
Class 300 lb

Nominal Pipe Size	Pipe	Flange Data				Lap	Hub	Drilling Data			Weight
		A	B	C	D	R	F	H	I	J	
	Outside Diameter	Overall Diameter	Inside Diameter	Flange Thickness min	Overall Length	Lap Radius	Hub Diameter	Number of Holes	Bolt Hole Diameter	Diameter of Circle of Holes	kg/ piece
	in mm	in mm	in mm	in mm	in mm	in mm	in mm		in mm	in mm	
1/2	0.840	3.750	0.900	0.560	0.880	0.120	1.500	4	0.620	2.620	0.62
	21.30	95.20	22.90	14.20	22.30	3.000	38.10		15.70	66.55	
3/4	1.050	4.620	1.110	0.620	1.000	0.120	1.880	4	0.750	3.250	1.10
	26.70	117.3	28.20	15.70	25.40	3.000	47.70		19.00	82.50	
1	1.315	4.880	1.380	0.690	1.060	0.120	2.120	4	0.750	3.500	1.33
	33.40	123.9	35.10	17.50	26.90	3.000	53.80		19.0	88.90	
1 1/4	1.660	5.250	1.720	0.750	1.060	0.190	2.500	4	0.750	3.880	1.65
	42.20	133.3	43.70	19.00	26.90	4.800	63.50		19.00	98.50	
1 1/2	1.900	6.120	1.970	0.810	1.190	0.250	2.750	4	0.880	4.500	2.44
	48.30	155.4	50.00	20.60	30.20	6.400	69.85		22.30	114.3	
2	2.375	6.500	2.460	0.880	1.310	0.310	3.310	8	0.750	5.000	2.83
	60.30	165.1	62.50	22.30	33.20	7.900	84.00		19.10	127.0	
2 1/2	2.875	7.500	2.970	1.000	1.500	0.310	3.940	8	0.880	5.880	4.25
	73.00	190.5	75.40	25.40	38.10	7.900	100.0		22.30	149.3	
3	3.500	8.250	3.600	1.120	1.690	0.380	4.620	8	0.880	6.620	5.78
	88.90	209.5	91.40	28.40	42.90	9.700	117.3		22.30	168.1	
3 1/2	4.000	9.000	4.100	1.190	1.750	0.380	5.250	8	0.880	7.250	7.27
	101.6	228.6	104.1	30.20	44.40	9.700	133.3		22.30	184.1	
4	4.500	10.00	4.600	1.250	1.880	0.440	5.750	8	0.880	7.880	9.55
	114.3	254.0	116.8	31.70	47.70	11.20	146.0		22.30	200.1	
5	5.563	11.00	5.690	1.380	2.000	0.440	7.000	8	0.880	9.250	12.2
	141.3	279.4	114.5	35.00	50.80	11.20	177.8		22.30	234.9	
6	6.625	12.50	6.750	1.440	2.060	0.500	8.120	12	0.880	10.62	15.5
	168.3	317.5	171.5	36.50	52.30	12.70	206.2		22.30	269.7	
8	8.625	15.00	8.750	1.620	2.440	0.500	10.25	12	1.000	13.00	24.1
	219.1	381.0	222.3	41.10	61.90	12.70	260.3		25.40	330.2	
10	10.75	17.50	10.92	1.880	3.750	0.500	12.62	16	1.120	15.25	34.4
	273.0	444.5	277.4	47.70	95.20	12.70	320.5		28.40	387.3	
12	12.75	20.50	12.92	2.000	4.000	0.500	14.75	16	1.250	17.75	50.4
	323.8	520.7	328.2	50.80	101.6	12.70	374.6		31.70	450.8	
14	14.00	23.00	14.18	2.120	4.380	0.500	16.75	20	1.250	20.25	70.9
	355.6	584.2	360.2	53.80	111.2	12.70	425.4		31.70	514.3	
16	16.00	25.50	16.19	2.250	4.750	0.500	19.00	20	1.380	22.50	89.5
	406.4	647.7	411.2	57.15	120.6	12.70	482.6		35.00	571.5	
18	18.00	28.00	18.20	2.380	5.120	0.500	21.00	24	1.380	24.75	111
	457.2	711.2	462.3	60.45	130.0	12.70	533.4		35.00	628.6	
20	20.00	30.50	20.25	2.500	5.500	0.500	23.12	24	1.380	27.00	137
	508.0	774.7	514.4	63.50	139.7	12.70	587.2		35.0	685.8	
24	24.00	36.00	24.25	2.750	6.000	0.500	27.62	24	1.620	32.00	204
	609.6	914.4	616.0	69.8	152.4	12.70	701.5		41.10	812.8	

Notes

- Weights are based on manufacturer's data and are approximate.
- For tolerances see page 8-4.

Lap Joint Flanges - ANSI B16.5



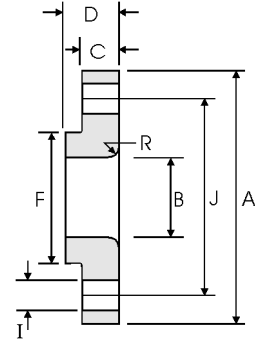
Class 400 lb

Nominal Pipe Size	Pipe	Flange Data				Lap	Hub	Drilling Data			Weight
		A	B	C	D	R	F	H	I	J	
	Outside Diameter	Overall Diameter	Inside Diameter	Flange Thickness min	Overall Length	Lap Radius	Hub Diameter	Number of Holes	Bolt Hole Diameter	Diameter of Circle of Holes	kg/ piece
	in mm	in mm	in mm	in mm	in mm	in mm	in mm		in mm	in mm	
1/2	0.840	3.750	0.900	0.560	0.880	0.120	1.500	4	0.620	2.620	0.72
	21.30	95.30	22.90	14.20	22.40	3.000	38.10		15.70	66.55	
3/4	1.050	4.620	1.110	0.620	1.000	0.120	1.880	4	0.750	3.250	1.25
	26.70	117.3	28.20	15.70	25.40	3.000	47.80		19.10	82.60	
1	1.315	4.880	1.380	0.690	1.060	0.120	2.120	4	0.750	3.500	1.50
	33.40	124.0	35.10	17.50	26.90	3.000	53.80		19.10	88.90	
1 1/4	1.660	5.250	1.720	0.810	1.120	0.190	2.500	4	0.750	3.880	2.00
	42.20	133.4	43.70	20.60	28.40	4.800	63.50		19.10	98.60	
1 1/2	1.900	6.120	1.970	0.880	1.250	0.250	2.750	4	0.880	4.500	2.92
	48.30	155.4	50.00	22.40	31.75	6.400	69.85		22.40	114.3	
2	2.375	6.500	2.460	1.000	1.440	0.310	3.310	8	0.750	5.000	3.55
	60.30	165.1	62.50	25.40	36.60	7.900	84.10		19.10	127.0	
2 1/2	2.875	7.500	2.970	1.120	1.620	0.310	3.940	8	0.880	5.880	5.23
	73.00	190.5	75.40	28.40	41.10	7.900	100.1		22.40	149.4	
3	3.500	8.250	3.600	1.125	1.810	0.380	4.620	8	0.880	6.620	6.95
	88.90	209.6	91.40	31.75	46.00	9.700	117.3		22.40	168.1	
3 1/2	4.000	9.000	4.100	1.380	1.940	0.380	5.250	8	1.000	7.250	8.78
	101.6	228.6	104.1	35.10	49.30	9.700	133.4		25.40	184.2	
4	4.500	10.00	4.600	1.380	2.000	0.440	5.750	8	1.000	7.880	10.9
	114.3	254.0	116.8	35.10	50.80	11.20	146.1		25.40	200.2	
5	5.563	11.00	5.690	1.500	2.120	0.440	7.000	8	1.000	9.250	13.7
	141.3	279.4	114.5	38.10	53.80	11.20	177.8		25.40	235.0	
6	6.625	12.50	6.750	1.620	2.250	0.500	8.120	12	1.000	10.62	18.0
	168.3	317.5	171.5	41.10	57.15	12.70	206.2		25.40	269.7	
8	8.625	15.00	8.750	1.880	2.690	0.500	10.25	12	1.120	13.00	28.3
	219.1	381.0	222.3	47.80	68.30	12.70	260.4		28.40	330.2	
10	10.75	17.50	10.92	2.120	4.000	0.500	12.62	16	1.250	15.25	38.8
	273.0	444.5	277.4	53.80	101.6	12.70	320.5		31.75	387.4	
12	12.75	20.50	12.92	2.250	4.250	0.500	14.75	16	1.380	17.75	56.6
	323.8	520.7	328.2	57.15	108.0	12.70	374.7		35.10	450.9	
14	14.00	23.00	14.18	2.380	4.620	0.500	16.75	20	1.380	20.25	78.6
	355.6	584.2	360.2	60.45	117.3	12.70	425.5		35.10	514.4	
16	16.00	25.50	16.19	2.500	5.000	0.500	19.00	20	1.500	22.50	100
	406.4	647.7	411.2	63.50	127.0	12.70	482.6		38.10	571.5	
18	18.00	28.00	18.20	2.620	5.380	0.500	21.00	24	1.500	24.75	122
	457.2	711.2	462.3	66.55	136.7	12.70	533.4		38.10	628.7	
20	20.00	30.50	20.25	2.750	5.750	0.500	23.12	24	1.620	27.00	145
	508.0	774.7	514.4	69.85	146.1	12.70	587.2		41.10	685.8	
24	24.00	36.00	24.25	3.000	6.250	0.500	27.62	24	1.880	32.00	217
	609.6	914.4	616.0	76.20	158.8	12.70	701.5		47.80	812.8	

Notes

- Weights are based on manufacturer's data and are approximate.
- For tolerances see page 8-4.

Lap Joint Flanges - ANSI B16.5



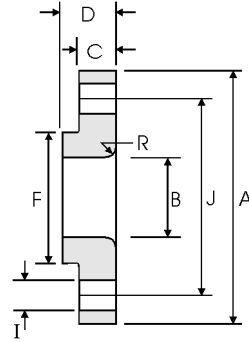
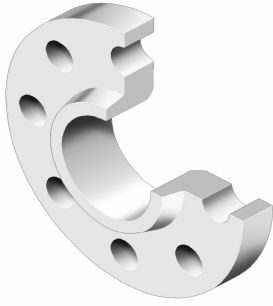
Class 600 lb

Nominal Pipe Size	Pipe	Flange Data				Lap	Hub	Drilling Data			Weight
		A	B	C	D	R	F	H	I	J	
	Outside Diameter	Overall Diameter	Inside Diameter	Flange Thickness min	Overall Length	Lap Radius	Hub Diameter	Number of Holes	Bolt Hole Diameter	Diameter of Circle of Holes	kg/ piece
	in mm	in mm	in mm	in mm	in mm	in mm	in mm		in mm	in mm	
1/2	0.840	3.750	0.900	0.560	0.880	0.120	1.500	4	0.620	2.620	0.72
	21.30	95.30	22.90	14.20	22.40	3.000	38.10		15.70	66.55	
3/4	1.050	4.620	1.110	0.620	1.000	0.120	1.880	4	0.750	3.250	1.25
	26.70	117.3	28.20	15.70	25.40	3.000	47.80		19.10	82.60	
1	1.315	4.880	1.380	0.690	1.060	0.120	2.120	4	0.750	3.500	1.50
	33.40	124.0	35.10	17.50	26.90	3.000	53.80		19.10	88.90	
1 1/4	1.660	5.250	1.720	0.810	1.120	0.190	2.500	4	0.750	3.880	2.00
	42.20	133.4	43.70	20.60	28.40	4.800	63.50		19.10	98.60	
1 1/2	1.900	6.120	1.970	0.880	1.250	0.250	2.750	4	0.880	4.500	2.92
	48.30	155.4	50.00	22.40	31.75	6.400	69.85		22.40	114.3	
2	2.375	6.500	2.460	1.000	1.440	0.310	3.310	8	0.750	5.000	3.55
	60.30	165.1	62.50	25.40	36.60	7.900	84.10		19.10	127.0	
2 1/2	2.875	7.500	2.970	1.120	1.620	0.310	3.940	8	0.880	5.880	5.23
	73.00	190.5	75.40	28.40	41.10	7.900	100.1		22.40	149.4	
3	3.500	8.250	3.600	1.125	1.810	0.380	4.620	8	0.880	6.620	6.95
	88.90	209.6	91.40	31.75	46.00	9.700	117.3		22.40	168.1	
3 1/2	4.000	9.000	4.100	1.380	1.940	0.380	5.250	8	1.000	7.250	8.78
	101.6	228.6	104.1	35.10	49.30	9.700	133.4		25.40	184.2	
4	4.500	10.75	4.600	1.500	2.120	0.440	6.000	8	1.000	8.500	14.4
	114.3	273.1	116.8	38.10	53.80	11.20	152.4		25.40	215.9	
5	5.563	13.00	5.690	1.750	2.380	0.440	7.440	8	1.120	10.50	24.3
	141.3	330.2	114.5	44.50	60.45	11.20	189.0		28.40	266.7	
6	6.625	14.00	6.750	1.880	2.620	0.500	8.750	12	1.120	11.50	28.5
	168.3	355.6	171.5	47.80	66.55	12.70	222.3		28.40	292.1	
8	8.625	16.50	8.750	2.190	3.000	0.500	10.75	12	1.250	13.75	43.1
	219.1	419.1	222.3	55.60	76.20	12.70	273.1		31.75	349.3	
10	10.75	20.00	10.92	2.500	4.380	0.500	13.50	16	1.380	17.00	70.5
	273.0	508.0	277.4	63.50	111.3	12.70	342.9		35.10	431.8	
12	12.75	22.00	12.92	2.620	4.620	0.500	15.75	20	1.380	19.25	86.1
	323.8	558.8	328.2	66.55	117.3	12.70	400.1		35.10	489.0	
14	14.00	23.75	14.18	2.750	5.000	0.500	17.00	20	1.500	20.75	100
	355.6	603.3	360.2	69.85	127.0	12.70	431.8		38.10	527.1	
16	16.00	27.00	16.19	3.000	5.500	0.500	19.50	20	1.620	23.75	145
	406.4	685.8	411.2	76.20	139.7	12.70	495.3		41.10	603.3	
18	18.00	29.25	18.20	3.250	6.000	0.500	21.50	20	1.750	25.75	177
	457.2	743.0	462.3	82.60	152.4	12.70	546.1		44.50	654.1	
20	20.00	32.00	20.25	3.500	6.500	0.500	24.00	24	1.750	28.50	225
	508.0	812.8	514.4	88.90	165.1	12.70	609.6		44.50	723.9	
24	24.00	37.00	24.25	4.000	7.250	0.500	28.25	24	2.000	33.00	318
	609.6	939.8	616.0	101.6	184.2	12.70	717.6		50.80	838.2	

Notes

- Weights are based on manufacturer's data and are approximate.
- For tolerances see page 8-4.

Lap Joint Flanges - ANSI B16.5



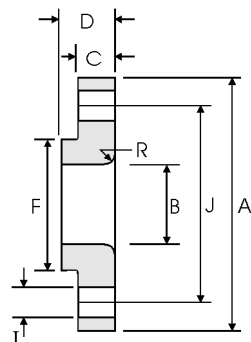
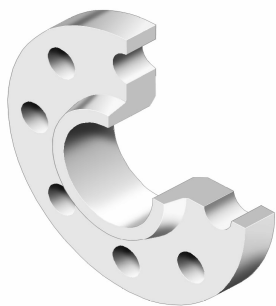
Class 900 lb

Nominal Pipe Size	Pipe	Flange Data				Lap	Hub	Drilling Data			Weight
		A	B	C	D	R	F	H	I	J	
	Outside Diameter	Overall Diameter	Inside Diameter	Flange Thickness min	Overall Length	Lap Radius	Hub Diameter	Number of Holes	Bolt Hole Diameter	Diameter of Circle of Holes	kg/ piece
	in mm	in mm	in mm	in mm	in mm	in mm	in mm		in mm	in mm	
1/2	0.840 21.30	4.750 120.6	0.900 22.90	0.880 22.30	1.250 31.70	0.120 3.000	1.500 38.10	4	0.880 22.30	3.250 82.50	1.71
3/4	1.050 26.70	5.120 130.0	1.110 28.20	1.000 25.40	1.380 35.00	0.120 3.000	1.750 44.40	4	0.880 22.30	3.500 88.90	2.30
1	1.315 33.40	5.880 149.3	1.380 35.10	1.120 28.40	1.620 41.10	0.120 3.000	2.060 52.30	4	1.000 25.40	4.000 101.6	3.40
1 1/4	1.660 42.20	6.250 158.7	1.720 43.70	1.120 28.40	1.620 41.10	0.190 4.800	2.500 63.50	4	1.000 25.40	4.380 111.2	3.85
1 1/2	1.900 48.30	7.000 177.8	1.970 50.00	1.250 31.70	1.750 44.40	0.250 6.400	2.750 69.85	4	1.120 28.40	4.880 123.9	5.28
2	2.375 60.30	8.500 215.9	2.460 62.50	1.500 38.10	2.250 57.15	0.310 7.900	4.120 104.6	8	1.000 25.40	6.500 165.1	9.78
2 1/2	2.875 73.00	9.620 244.3	2.970 75.40	1.620 41.10	2.500 63.50	0.310 7.900	4.880 123.9	8	1.120 28.40	7.500 190.5	13.6
3	3.500 88.90	9.500 241.3	3.600 91.40	1.500 38.10	2.120 53.80	0.380 9.700	5.000 127.0	8	1.000 25.40	7.500 190.5	11.3
4	4.500 114.3	11.50 292.1	4.600 116.8	1.750 44.40	2.750 69.85	0.440 11.20	6.250 158.7	8	1.250 31.70	9.250 234.9	19.2
5	5.563 141.3	13.75 349.2	5.690 144.5	2.000 50.80	3.120 79.25	0.440 11.20	7.500 190.5	8	1.380 35.00	11.00 279.4	31.20
6	6.625 168.3	15.00 381.0	6.750 171.5	2.190 55.60	3.380 85.80	0.500 12.70	9.250 234.9	12	1.250 31.70	12.50 317.5	40.50
8	8.625 219.1	18.50 469.9	8.750 222.3	2.500 63.50	4.500 114.3	0.500 12.70	11.75 298.4	12	1.500 38.10	15.50 393.7	71.5
10	10.75 273.0	21.50 546.1	10.92 277.4	2.750 69.85	5.000 127.0	0.500 12.70	14.50 368.3	16	1.500 38.10	18.50 469.9	104
12	12.75 323.8	24.00 609.6	12.92 328.2	3.120 79.25	5.620 142.7	0.500 12.70	16.50 419.1	20	1.500 38.10	21.00 533.4	139
14	14.00 355.6	25.25 641.3	14.18 360.2	3.380 85.80	6.120 155.4	0.500 12.70	17.75 450.8	20	1.620 41.10	22.00 558.8	161
16	16.00 406.4	27.75 704.8	16.19 411.2	3.500 88.90	6.500 165.1	0.500 12.70	20.00 508.0	20	1.750 44.40	24.25 615.9	194
18	18.00 457.2	31.00 787.4	18.20 462.3	4.000 101.6	7.500 190.5	0.500 12.70	22.25 565.1	20	2.000 50.80	27.00 685.8	267
20	20.00 508.0	33.75 857.2	20.25 514.4	4.250 107.9	8.250 209.5	0.500 12.70	24.50 622.3	20	2.120 53.80	29.50 749.3	334
24	24.00 609.6	41.00 1041.4	24.25 616.0	50.50 139.7	10.50 266.7	0.500 12.70	29.50 749.3	20	2.620 66.55	35.50 901.7	618

Notes

- Weights are based on manufacturer's data and are approximate.
- For tolerances see page 8-4.

Lap Joint Flanges - ANSI B16.5



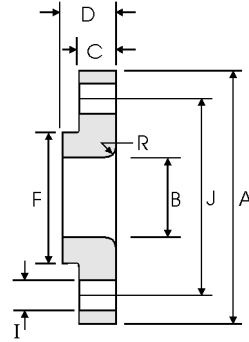
Class 150 lb

Nominal Pipe Size	Pipe	Flange Data				Lap	Hub	Drilling Data			Weight
		A	B	C	D	R	F	H	I	J	
	Outside Diameter	Overall Diameter	Inside Diameter	Flange Thickness min	Overall Length	Lap Radius	Hub Diameter	Number of Holes	Bolt Hole Diameter	Diameter of Circle of Holes	kg/ piece
	in mm	in mm	in mm	in mm	in mm	in mm	in mm		in mm	in mm	
1/2	0.840	4.750	0.900	0.880	1.250	0.120	1.500	4	0.880	3.250	1.71
	21.30	120.6	22.90	22.30	31.70	3.000	38.10		22.30	82.50	
3/4	1.050	5.120	1.110	1.000	1.380	0.120	1.750	4	0.880	3.500	2.30
	26.70	130.0	28.20	25.40	35.00	3.000	44.40		22.30	88.90	
1	1.315	5.880	1.380	1.120	1.620	0.120	2.060	4	1.000	4.000	3.40
	33.40	149.3	35.10	28.40	41.10	3.000	52.30		25.40	101.6	
1 1/4	1.660	6.250	1.720	1.120	1.620	0.190	2.500	4	1.000	4.380	3.85
	42.20	158.7	43.70	28.40	41.10	4.800	63.50		25.40	111.2	
1 1/2	1.900	7.000	1.970	1.250	1.750	0.250	2.750	4	1.120	4.880	5.28
	48.30	177.8	50.00	31.70	44.40	6.400	69.85		28.40	123.9	
2	2.375	8.500	2.460	1.500	2.250	0.310	4.120	8	1.000	6.500	9.78
	60.30	215.9	62.50	38.10	57.15	7.900	104.6		25.40	165.1	
2 1/2	2.875	9.620	2.970	1.620	2.500	0.310	4.880	8	1.120	7.500	13.6
	73.00	244.3	75.40	41.10	63.50	7.900	123.9		28.40	190.5	
3	3.500	10.50	3.600	1.880	2.880	0.380	5.250	8	1.250	8.000	17.8
	88.90	266.7	91.40	47.70	73.15	9.700	133.3		31.70	203.2	
4	4.500	12.25	4.600	2.120	3.560	0.440	6.380	8	1.380	9.500	27.5
	114.3	311.1	116.8	53.80	90.40	11.20	162.0		35.00	241.3	
5	5.563	14.75	5.690	2.880	4.120	0.440	7.750	8	1.620	11.50	51.5
	141.3	374.6	114.5	73.15	104.6	11.20	196.8		41.10	292.1	
6	6.625	15.50	6.750	3.250	4.690	0.500	9.000	12	1.500	12.50	62.0
	168.3	399.7	171.5	82.50	119.1	12.70	228.6		38.10	317.5	
8	8.625	19.00	8.750	3.620	5.620	0.500	11.50	12	1.750	15.50	105
	219.1	482.6	222.3	91.90	142.7	12.70	292.1		44.40	393.7	
10	10.75	23.00	10.92	4.250	7.000	0.500	14.50	12	2.000	19.00	179
	273.0	584.2	277.4	107.9	177.8	12.70	368.3		50.80	482.6	
12	12.75	26.50	12.92	4.880	8.620	0.500	17.75	16	2.120	22.50	269
	323.8	673.1	328.2	123.9	218.9	12.70	450.8		53.80	571.5	
14	14.00	29.50	14.18	5.250	9.500	0.500	19.50	16	2.380	25.00	365
	355.6	749.3	360.2	133.3	241.3	12.70	495.3		60.45	635.0	
16	16.00	32.50	16.19	5.750	10.25	0.500	21.75	16	2.620	27.75	459
	406.4	825.5	411.2	146.0	260.3	12.70	552.4		66.55	704.8	
18	18.00	36.00	18.20	6.380	10.88	0.500	23.50	16	2.880	30.50	598
	457.2	914.4	462.3	162.0	276.3	12.70	596.9		73.15	774.7	
20	20.00	38.75	20.25	7.000	11.50	0.500	25.25	16	3.120	32.75	712
	508.0	984.2	514.4	177.8	292.1	12.70	641.3		79.25	831.8	
24	24.00	46.00	24.25	8.000	13.00	0.500	30.00	16	3.620	39.00	1090
	609.6	1168.4	616.0	203.2	330.2	12.70	762.0		91.90	990.6	



Notes

- Weights are based on manufacturer's data and are approximate.
- For tolerances see page 8-4.

Lap Joint Flanges - ANSI B16.5



Class 2500 lb

Nominal Pipe Size	Pipe	Flange Data				Lap	Hub	Drilling Data			Weight
		A	B	C	D	R	F	H	I	J	
	Outside Diameter	Overall Diameter	Inside Diameter	Flange Thickness min	Overall Length	Lap Radius	Hub Diameter	Number of Holes	Bolt Hole Diameter	Diameter of Circle of Holes	kg/ piece
	in mm	in mm	in mm	in mm	in mm	in mm	in mm	in mm	in mm	in mm	
1/2	0.840	5.255	0.900	1.190	1.560	0.120	1.690	4	0.880	3.500	2.92
	21.30	133.4	22.90	30.20	39.60	3.000	42.90		22.40	88.90	
3/4	1.050	5.500	1.110	1.250	1.690	0.120	2.000	4	0.880	3.750	3.40
	26.70	139.7	28.20	31.75	42.90	3.000	50.80		22.40	95.30	
1	1.315	6.250	1.380	1.380	1.880	0.120	2.250	4	1.000	4.250	4.77
	33.40	158.8	35.10	35.10	47.80	3.000	57.15		25.40	108.0	
1 1/4	1.660	7.250	1.720	1.500	2.060	0.190	2.880	4	1.120	5.120	7.08
	42.20	184.2	43.70	38.10	52.30	4.800	73.15		28.40	130.0	
1 1/2	1.900	8.000	1.970	1.750	2.380	0.250	3.120	4	1.250	5.750	9.93
	48.30	203.2	50.00	44.50	60.45	6.400	79.25		31.75	146.1	
2	2.375	9.250	2.460	2.000	2.750	0.310	3.750	8	1.120	6.750	14.7
	60.30	235.0	62.50	50.80	69.85	7.900	95.30		28.40	171.5	
2 1/2	2.875	10.50	2.970	2.250	3.120	0.310	4.500	8	1.250	7.750	21.3
	73.00	266.7	75.40	57.15	79.25	7.900	114.3		31.75	196.9	
3	3.500	12.00	3.600	2.620	3.620	0.380	5.250	8	1.380	9.000	32.3
	88.90	304.8	91.40	66.55	91.90	9.700	133.4		35.10	228.6	
4	4.500	14.00	4.600	3.000	4.250	0.440	6.500	8	1.620	10.75	52.5
	114.3	355.6	116.8	76.20	108.0	11.20	165.1		41.10	273.1	
5	5.563	16.50	5.690	3.620	5.120	0.440	8.000	8	1.880	12.75	82.6
	141.3	419.1	114.5	91.90	130.0	11.20	203.2		47.80	323.9	
6	6.625	19.00	6.750	4.250	6.000	0.500	9.250	8	2.120	14.50	127
	168.3	482.6	171.5	108.0	152.4	12.70	235.0		53.80	368.3	
8	8.625	21.75	8.750	5.000	7.000	0.500	12.00	12	2.120	17.25	186
	219.1	552.5	222.3	127.0	177.8	12.70	304.8		53.80	438.2	
10	10.75	26.50	10.92	6.500	9.000	0.500	14.75	12	2.620	21.25	352
	273.0	673.1	277.4	165.1	228.6	12.70	374.7		66.55	539.8	
12	12.75	30.00	12.92	7.250	10.00	0.500	17.38	12	2.880	24.38	501
	323.8	762.0	328.2	184.2	254.0	12.70	441.5		73.15	619.3	

Notes

- Weights are based on manufacturer's data and are approximate.
- For tolerances see page 8-4.