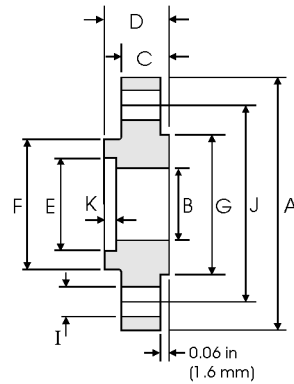
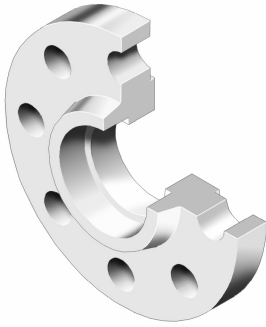


Socket Welding Flanges - ANSI B16.5



Class 150 lb

Pipe	Flange						Hub	Raised Face	Drilling Data			Weight	
Nominal Pipe Size	A	B	C	D	E	K	F	G	H	I	J	kg/piece	
Outside Diameter	Overall Diameter	Inside Diameter	Flange Thickness min	Overall Length	Socket Diameter	Depth of Socket	Hub Diameter	Face Diameter	No. of Holes	Bolt Hole Diameter	Diameter of Circle of Holes	kg/piece	
in mm	in mm	in mm	in mm	in mm	in mm	in mm	in mm	in mm		in mm	in mm		
1/2	0.840 21.30	3.500 88.90	0.620 15.70	0.440 11.20	0.620 15.70	0.880 22.40	0.380 9.600	1.190 30.20	1.380 35.10	4	0.620 15.70	2.380 60.45	0.42
3/4	1.050 26.70	3.880 98.60	0.820 20.80	0.500 12.70	0.620 15.70	1.090 27.70	0.440 11.10	1.500 38.10	1.690 42.90	4	0.620 15.70	2.750 69.85	0.59
1	1.315 33.40	4.250 108.0	1.050 26.70	0.560 14.20	0.690 17.50	1.360 34.50	0.500 12.70	1.940 49.30	2.000 50.80	4	0.620 15.70	3.120 79.25	0.81
1 1/4	1.660 42.20	4.620 117.3	1.380 35.10	0.620 15.70	0.810 20.60	1.700 43.20	0.560 14.20	2.310 58.70	2.500 63.50	4	0.620 15.70	3.500 88.90	1.07
1 1/2	1.900 48.30	5.000 127.0	1.610 40.90	0.690 17.50	0.880 22.30	1.950 49.50	0.620 15.70	2.560 65.00	2.880 73.15	4	0.620 15.70	3.880 98.60	1.36
2	2.375 60.30	6.000 152.4	2.070 52.60	0.750 19.10	1.000 25.40	2.440 62.00	0.690 17.50	3.060 77.70	3.620 91.90	4	0.750 19.10	4.750 120.7	2.10
2 1/2	2.875 73.00	7.000 177.8	2.470 62.70	0.880 22.40	1.120 28.40	2.940 74.70	0.750 19.00	3.560 90.40	4.120 104.6	4	0.750 19.10	5.500 139.7	3.33
3	3.500 88.90	7.500 190.5	3.070 78.00	0.940 23.90	1.190 30.20	3.570 90.70	0.810 20.60	4.250 108.0	5.000 127.0	4	0.750 19.10	6.000 152.4	3.90

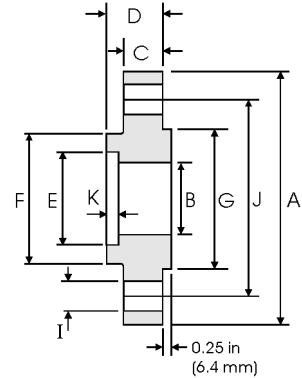
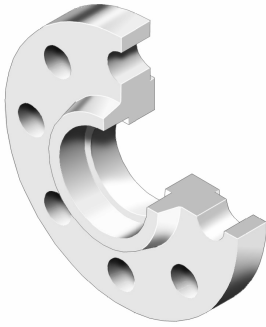
Class 300 lb

Pipe	Flange						Hub	Raised Face	Drilling Data			Weight	
Nominal Pipe Size	A	B	C	D	E	K	F	G	H	I	J	kg/piece	
Outside Diameter	Overall Diameter	Inside Diameter	Flange Thickness min	Overall Length	Socket Diameter	Depth of Socket	Hub Diameter	Face Diameter	No. of Holes	Bolt Hole Diameter	Diameter of Circle of Holes	kg/piece	
in mm	in mm	in mm	in mm	in mm	in mm	in mm	in mm	in mm		in mm	in mm		
1/2	0.840 21.30	3.750 95.20	0.620 15.70	0.560 14.20	0.880 22.30	0.880 22.40	0.380 9.600	1.500 38.10	1.380 35.10	4	0.620 15.70	2.620 66.55	0.66
3/4	1.050 26.70	4.620 117.3	0.820 20.80	0.620 15.70	1.000 25.40	1.090 27.70	0.440 11.10	1.880 47.70	1.690 42.90	4	0.750 19.10	3.250 82.50	1.15
1	1.315 33.40	4.880 123.9	1.050 26.70	0.690 17.50	1.060 26.90	1.360 34.50	0.500 12.70	2.120 53.80	2.000 50.80	4	0.750 19.10	3.500 88.90	1.40
1 1/4	1.660 42.20	5.250 133.3	1.380 35.10	0.750 19.00	1.060 26.90	1.700 43.20	0.560 14.20	2.500 63.50	2.500 63.50	4	0.750 19.10	3.880 98.60	1.75
1 1/2	1.900 48.30	6.120 155.4	1.610 40.90	0.810 20.60	1.190 30.20	1.950 49.50	0.620 15.70	2.750 69.85	2.880 73.15	4	0.880 22.30	4.500 114.3	2.55
2	2.375 60.30	6.500 165.1	2.070 52.60	0.880 22.30	1.310 33.20	2.440 62.00	0.690 17.50	3.310 84.00	3.620 91.90	8	0.750 19.10	5.000 127.0	2.93
2 1/2	2.875 73.00	7.500 190.5	2.470 62.70	1.000 25.40	1.500 38.10	2.940 74.70	0.750 19.00	3.940 100.0	4.120 104.6	8	0.880 22.30	5.880 149.3	4.40
3	3.500 88.90	8.250 209.5	3.070 78.00	1.120 28.40	1.690 42.90	3.570 90.70	0.810 20.60	4.620 117.3	5.000 127.0	8	0.880 22.30	6.620 168.1	5.92

Notes

- Dimension B corresponds to the pipe inside diameter. Values quoted assume 40S/Standard wall thickness.
- Weights are based on manufacturer's data and are approximate.
- For ring joint facings see page 8-6. For tolerances see page 8-4.

Socket Welding Flanges - ANSI B16.5



Class 600 lb

Pipe		Flange					Hub	Raised Face	Drilling Data			Weight	
Nominal Pipe Size		A	B	C	D	E	K	F	G	H	I	J	
	Outside Diameter	Overall Diameter	Inside Diameter	Flange Thickness min	Overall Length	Socket Diameter	Depth of Socket	Hub Diameter	Face Diameter	No. of Holes	Bolt Hole Diameter	Diameter of Circle of Holes	kg/ piece
	in mm	in mm	in mm	in mm	in mm	in mm	in mm	in mm	in mm		in mm	in mm	
1/2	0.840	3.750	To be specified by the Purchaser	0.560	0.880	0.880	0.380	1.500	1.380	4	0.620	2.620	0.76
	21.30	95.20		14.20	22.30	22.40	9.600	38.10	35.10		15.70	66.55	
3/4	1.050	4.620		0.620	1.000	1.090	0.440	1.880	1.690	4	0.750	3.250	1.29
	26.70	117.3		15.70	25.40	27.70	11.10	47.70	42.90		19.10	82.50	
1	1.315	4.880		0.690	1.060	1.360	0.500	2.120	2.000	4	0.750	3.500	1.55
	33.40	123.9		17.50	26.90	34.50	12.70	53.80	50.80		19.10	88.90	
1 1/4	1.660	5.250		0.810	1.120	1.700	0.560	2.500	2.500	4	0.750	3.880	2.06
	42.20	133.3		20.60	28.40	43.20	14.20	63.50	63.50		19.10	98.60	
1 1/2	1.900	6.120		0.880	1.250	1.950	0.620	2.750	2.880	4	0.880	4.500	3.00
	48.30	155.4		22.30	31.75	49.50	15.70	69.85	73.15		22.30	114.3	
2	2.375	6.500		1.000	1.440	2.440	0.690	3.310	3.620	8	0.750	5.000	3.67
	60.30	165.1		25.40	36.60	62.00	17.50	84.00	91.90		19.10	127.0	
2 1/2	2.875	7.500		1.120	1.620	2.940	0.750	3.940	4.120	8	0.880	5.880	5.35
	73.00	190.5		28.40	41.10	74.70	19.00	100.0	104.6		22.30	149.3	
3	3.500	8.250	1.250	1.810	3.570	0.810	4.620	5.000	8	0.880	6.620	7.06	
	88.90	209.5	31.75	46.00	90.70	20.60	117.3	127.0		22.30	168.1		

Class 1500 lb

Pipe		Flange					Hub	Raised Face	Drilling Data			Weight	
Nominal Pipe Size		A	B	C	D	E	K	F	G	H	I	J	
	Outside Diameter	Overall Diameter	Inside Diameter	Flange Thickness min	Overall Length	Socket Diameter	Depth of Socket	Hub Diameter	Face Diameter	No. of Holes	Bolt Hole Diameter	Diameter of Circle of Holes	kg/ piece
	in mm	in mm	in mm	in mm	in mm	in mm	in mm	in mm	in mm		in mm	in mm	
1/2	0.840	4.750	To be specified by the Purchaser	0.880	1.250	0.880	0.380	1.500	1.380	4	0.880	3.250	1.80
	21.30	120.6		22.30	31.70	22.40	9.600	38.10	35.10		22.30	82.50	
3/4	1.050	5.120		1.000	1.380	1.090	0.440	1.750	1.690	4	0.880	3.500	2.41
	26.70	130.0		25.40	35.00	27.70	11.10	44.40	42.90		22.30	88.90	
1	1.315	5.880		1.120	1.620	1.360	0.500	2.060	2.000	4	1.000	4.000	3.55
	33.40	149.3		28.40	41.10	34.50	12.70	52.30	50.80		25.40	101.6	
1 1/4	1.660	6.250		1.120	1.620	1.700	0.560	2.500	2.500	4	1.000	4.380	4.02
	42.20	158.7		28.40	41.10	43.20	14.20	63.50	63.50		25.40	111.2	
1 1/2	1.900	7.000		1.250	1.750	1.950	0.620	2.750	2.880	4	1.120	4.880	5.45
	48.30	177.8		31.75	44.50	49.50	15.70	69.85	73.15		28.40	123.9	
2	2.375	8.500		1.500	2.250	2.440	0.690	4.120	3.620	8	1.000	6.500	10.2
	60.30	215.9		38.10	57.15	62.00	17.50	104.6	91.90		25.40	165.1	
2 1/2	2.875	9.620		1.620	2.500	2.940	0.750	4.880	4.120	8	1.120	7.500	13.9
	73.00	244.3		41.10	63.50	74.70	19.00	123.9	104.6		28.40	190.5	

Notes

- Class 400 socket weld flanges may be provided in NPS 1/2 to 2 1/2 using Class 600 dimensions
- Dimension B corresponds to the pipe inside diameter. Values quoted assume 40S/Standard wall thickness.
- Weights are based on manufacturer's data and are approximate.
- For ring joint facings see page 8-6. For tolerances see page 8-4.