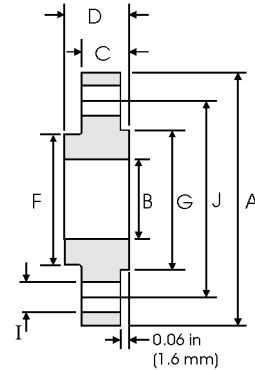




Slip On Flanges - ANSI B16.5



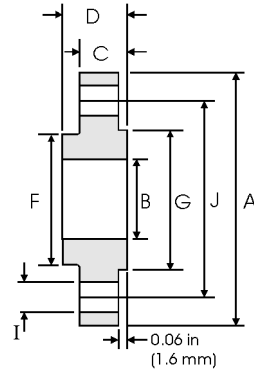
Class 150 lb

Pipe		Flange Data				Hub	Raised Face	Drilling Data			Weight
Nominal Pipe Size		A	B	C	D	F	G	H	I	J	
	Outside Diameter	Overall Diameter	Inside Diameter	Flange Thickness min	Overall Length	Hub Diameter	Face Diameter	Number of Holes	Bolt Hole Diameter	Diameter of Circle of Holes	kg/ piece
	in mm	in mm	in mm	in mm	in mm	in mm	in mm		in mm	in mm	
1/2	0.840	3.500	0.880	0.440	0.620	1.190	1.380	4	0.620	2.380	0.39
	21.30	88.90	22.40	11.20	15.70	30.20	35.10				
3/4	1.050	3.880	1.090	0.500	0.620	1.500	1.690	4	0.620	2.750	0.56
	26.70	98.60	27.70	12.70	15.70	38.10	42.90				
1	1.315	4.250	1.360	0.560	0.690	1.940	2.000	4	0.620	3.120	0.78
	33.40	108.0	34.50	14.20	17.50	49.30	50.80				
1 1/4	1.660	4.620	1.700	0.620	0.810	2.310	2.500	4	0.620	3.500	1.03
	42.20	117.3	43.20	15.70	20.60	58.70	63.50				
1 1/2	1.900	5.000	1.950	0.690	0.880	2.560	2.880	4	0.620	3.880	1.32
	48.30	127.0	49.50	17.50	22.40	65.00	73.15				
2	2.375	6.000	2.440	0.750	1.000	3.060	3.620	4	0.750	4.750	2.06
	60.30	152.4	62.00	19.10	25.40	77.70	91.90				
2 1/2	2.875	7.000	2.940	0.880	1.120	3.560	4.120	4	0.750	5.500	3.28
	73.00	177.8	74.70	22.40	28.40	90.40	104.6				
3	3.500	7.500	3.570	0.940	1.190	4.250	5.000	4	0.750	6.000	3.85
	88.90	190.5	90.70	23.90	30.20	108.0	127.0				
3 1/2	4.000	8.500	4.070	0.940	1.250	4.810	5.500	8	0.750	7.000	4.81
	101.6	215.9	103.4	23.90	31.75	122.2	139.7				
4	4.500	9.000	4.570	0.940	1.310	5.310	6.190	8	0.750	7.500	5.30
	114.3	228.6	116.1	23.90	33.30	134.9	157.2				
5	5.563	10.00	5.660	0.940	1.440	6.440	7.310	8	0.880	8.500	6.07
	141.3	254.0	143.8	23.90	36.60	163.6	185.7				
6	6.625	11.00	6.720	1.000	1.560	7.560	8.500	8	0.880	9.500	7.45
	168.3	279.4	170.7	25.40	39.60	192.0	215.9				
8	8.625	13.50	8.720	1.120	1.750	9.690	10.62	8	0.880	11.75	12.1
	219.1	342.9	221.5	28.40	44.50	246.1	269.7				
10	10.75	16.00	10.88	1.190	1.940	12.00	12.75	12	1.000	14.25	16.5
	273.0	406.4	276.3	30.20	49.30	304.8	323.9				
12	12.75	19.00	12.88	1.250	2.190	14.38	15.00	12	1.000	17.00	26.2
	323.8	482.6	327.1	31.75	55.60	365.3	381.0				
14	14.00	21.00	14.14	1.380	2.250	15.75	16.25	12	1.120	18.75	34.6
	355.6	533.4	359.1	35.10	57.15	400.1	412.8				
16	16.00	23.50	16.16	1.440	2.500	18.00	18.50	16	1.120	21.25	44.8
	406.4	596.9	410.5	36.60	63.50	457.2	469.9				
18	18.00	25.00	18.18	1.560	2.690	19.88	21.00	16	1.250	22.75	48.9
	457.2	635.0	461.8	39.60	68.30	505.0	533.4				
20	20.00	27.50	20.20	1.690	2.880	22.00	23.00	20	1.250	25.00	61.9
	508.0	698.5	513.1	42.90	73.15	558.8	584.2				
24	24.00	32.00	24.25	1.880	3.250	26.12	27.25	20	1.380	29.50	86.9
	609.6	812.8	616.0	47.80	82.60	663.4	692.2				

Notes

- Weights are based on manufacturer's data and are approximate.
- Flat face flanges may be provided at full thickness, C, or with raised face removed (the latter is nonstandard).
- For ring joint facings see page 8-6.
- For tolerances see page 8-4.

Slip On Flanges - ANSI B16.5



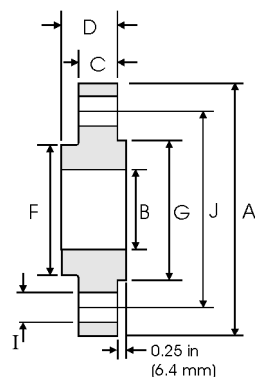
Class 300 lb

Nominal Pipe Size	Pipe	Flange Data				Hub	Raised Face	Drilling Data			Weight
		A	B	C	D	F	G	H	I	J	
	Outside Diameter	Overall Diameter	Inside Diameter	Flange Thickness min	Overall Length	Hub Diameter	Face Diameter	Number of Holes	Bolt Hole Diameter	Diameter of Circle of Holes	kg/ piece
	in mm	in mm	in mm	in mm	in mm	in mm	in mm		in mm	in mm	
1/2	0.840	3.750	0.880	0.560	0.880	1.500	1.380	4	0.620	2.620	0.64
	21.30	95.20	22.40	14.20	22.40	38.10	35.10		15.70	66.55	
3/4	1.050	4.620	1.090	0.620	1.000	1.880	1.690	4	0.750	3.250	1.12
	26.70	117.3	27.70	15.70	25.40	47.70	42.90		19.10	82.50	
1	1.315	4.880	1.360	0.690	1.060	2.120	2.000	4	0.750	3.500	1.36
	33.40	123.9	34.50	17.50	26.90	53.80	50.80		19.10	88.90	
1 1/4	1.660	5.250	1.700	0.750	1.060	2.500	2.500	4	0.750	3.880	1.68
	42.20	133.3	43.20	19.00	26.90	63.50	63.50		19.10	98.60	
1 1/2	1.900	6.120	1.950	0.810	1.190	2.750	2.880	4	0.880	4.500	2.49
	48.30	155.4	49.50	20.60	30.20	69.85	73.15		22.40	114.3	
2	2.375	6.500	2.440	0.880	1.310	3.310	3.620	8	0.750	5.000	2.87
	60.30	165.1	62.00	22.30	33.20	84.00	91.90		19.10	127.0	
2 1/2	2.875	7.500	2.940	1.000	1.500	3.940	4.120	8	0.880	5.880	4.32
	73.00	190.5	74.70	25.40	38.10	100.0	104.6		22.40	149.4	
3	3.500	8.250	3.570	1.120	1.690	4.620	5.000	8	0.880	6.620	5.85
	88.90	209.5	90.70	28.40	42.90	117.3	127.0		22.40	168.1	
3 1/2	4.000	9.000	4.070	1.190	1.750	5.250	5.500	8	0.880	7.250	7.34
	101.6	228.6	103.4	30.20	44.40	133.3	139.7		22.40	184.2	
4	4.500	10.00	4.570	1.250	1.880	5.750	6.190	8	0.880	7.880	9.61
	114.3	254.0	116.1	31.70	47.70	146.0	157.2		22.40	200.1	
5	5.563	11.00	5.660	1.380	2.000	7.000	7.310	8	0.880	9.250	12.3
	141.3	279.4	143.8	35.00	50.80	177.8	185.7		22.40	234.9	
6	6.625	12.50	6.720	1.440	2.060	8.120	8.500	12	0.880	10.62	15.6
	168.3	317.5	170.7	36.50	52.30	206.2	215.9		22.40	269.7	
8	8.625	15.00	8.720	1.620	2.440	10.25	10.62	12	1.000	13.00	24.2
	219.1	381.0	221.5	41.10	61.90	260.3	269.7		25.40	330.2	
10	10.75	17.50	10.88	1.880	2.620	12.62	12.75	16	1.120	15.25	34.1
	273.0	444.5	276.3	47.70	66.55	320.5	323.9		28.40	387.3	
12	12.75	20.50	12.88	2.000	2.880	14.75	15.00	16	1.250	17.75	49.8
	323.8	520.7	327.1	50.80	73.15	374.6	381.0		31.70	450.8	
14	14.00	23.00	14.14	2.120	3.000	16.75	16.25	20	1.250	20.25	69.9
	355.6	584.2	359.1	53.80	76.20	425.4	412.8		31.70	514.4	
16	16.00	25.50	16.16	2.250	3.250	19.00	18.50	20	1.380	22.50	88.1
	406.4	647.7	410.5	57.15	82.50	482.6	469.9		35.00	571.5	
18	18.00	28.00	18.18	2.380	3.500	21.00	21.00	24	1.380	24.75	109
	457.2	711.2	461.8	60.45	88.90	533.4	533.4		35.00	628.7	
20	20.00	30.50	20.20	2.500	3.750	23.12	23.00	24	1.380	27.00	134
	508.0	774.7	513.1	63.50	95.20	587.2	584.2		35.00	685.8	
24	24.00	36.00	24.25	2.750	4.190	27.62	27.25	24	1.620	32.00	201
	609.6	914.4	616.0	69.85	106.4	701.5	692.2		41.00	812.8	



Notes

- Weights are based on manufacturer's data and are approximate.
- Flat face flanges may be provided at full thickness, C, or with raised face removed (the latter is nonstandard).
- For ring joint facings see page 8-6.
- For tolerances see page 8-4.

Slip On Flanges - ANSI B16.5



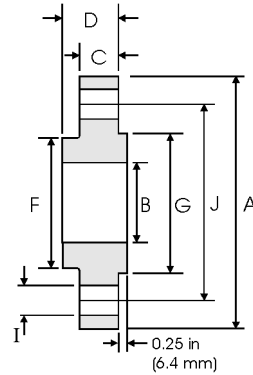
Class 400 lb

Pipe		Flange Data				Hub	Raised Face	Drilling Data			Weight
Nominal Pipe Size		A	B	C	D	F	G	H	I	J	
	Outside Diameter	Overall Diameter	Inside Diameter	Flange Thickness min	Overall Length	Hub Diameter	Face Diameter	Number of Holes	Bolt Hole Diameter	Diameter of Circle of Holes	kg/ piece
	in mm	in mm	in mm	in mm	in mm	in mm	in mm		in mm	in mm	
1/2	0.840	3.750	0.880	0.560	0.880	1.500	1.380	4	0.620	2.620	0.74
	21.30	95.30	22.40	14.20	22.40	38.10	35.10		15.70	66.55	
3/4	1.050	4.620	1.090	0.620	1.000	1.880	1.690	4	0.750	3.250	1.27
	26.70	117.3	27.70	15.70	25.40	47.70	42.90		19.10	82.50	
1	1.315	4.880	1.360	0.690	1.060	2.120	2.000	4	0.750	3.500	1.52
	33.40	124.0	34.50	17.50	26.90	53.80	50.80		19.10	88.90	
1 1/4	1.660	5.250	1.700	0.810	1.120	2.500	2.500	4	0.750	3.880	2.03
	42.20	133.4	43.20	20.60	28.40	63.50	63.50		19.10	98.60	
1 1/2	1.900	6.120	1.950	0.880	1.250	2.750	2.880	4	0.880	4.500	2.96
	48.30	155.4	49.50	22.40	31.75	69.85	73.15		22.40	114.3	
2	2.375	6.500	2.440	1.000	1.440	3.310	3.620	8	0.750	5.000	3.62
	60.30	165.1	62.00	25.40	36.60	84.00	91.90		19.10	127.0	
2 1/2	2.875	7.500	2.940	1.120	1.620	3.940	4.120	8	0.880	5.880	5.28
	73.00	190.5	74.70	28.40	41.10	100.0	104.6		22.40	149.4	
3	3.500	8.250	3.570	1.250	1.810	4.620	5.000	8	0.880	6.620	7.00
	88.90	209.6	90.70	31.75	46.00	117.3	127.0		22.40	168.1	
3 1/2	4.000	9.000	4.070	1.380	1.940	5.250	5.500	8	1.000	7.250	8.84
	101.6	228.6	103.4	35.10	49.30	133.3	139.7		25.40	184.2	
4	4.500	10.00	4.570	1.380	2.000	5.750	6.190	8	1.000	7.880	11.1
	114.3	254.0	116.1	35.10	50.80	146.0	157.2		25.40	200.1	
5	5.563	11.00	5.660	1.500	2.120	7.000	7.310	8	1.000	9.250	13.9
	141.3	279.4	143.8	38.10	53.80	177.8	185.7		25.40	234.9	
6	6.625	12.50	6.720	1.620	2.250	8.120	8.500	12	1.000	10.62	18.3
	168.3	317.5	170.7	41.10	57.15	206.2	215.9		25.40	269.7	
8	8.625	15.00	8.720	1.880	2.690	10.25	10.62	12	1.120	13.00	28.6
	219.1	381.0	221.5	47.80	68.30	260.3	269.7		28.40	330.2	
10	10.75	17.50	10.88	2.120	2.880	12.62	12.75	16	1.250	15.25	39.2
	273.0	444.5	276.3	53.80	73.15	320.5	323.9		31.75	387.3	
12	12.75	20.50	12.88	2.250	3.120	14.75	15.00	16	1.380	17.75	57.0
	323.8	520.7	327.1	57.15	79.25	374.6	381.0		35.10	450.8	
14	14.00	23.00	14.14	2.380	3.310	16.75	16.25	20	1.380	20.25	79.1
	355.6	584.2	359.1	60.05	84.10	425.4	412.8		35.10	514.4	
16	16.00	25.50	16.16	2.500	3.690	19.00	18.50	20	1.500	22.50	101
	406.4	647.7	410.5	63.50	93.70	482.6	469.9		38.10	571.5	
18	18.00	28.00	18.18	2.620	3.880	21.00	21.00	24	1.500	24.75	123
	457.2	711.2	461.8	66.55	98.60	533.4	533.4		38.10	628.7	
20	20.00	30.50	20.20	2.750	4.000	23.12	23.00	24	1.620	27.00	146
	508.0	774.7	513.1	69.85	101.6	587.2	584.2		41.10	685.8	
24	24.00	36.00	24.25	3.000	4.500	27.62	27.25	24	1.880	32.00	219
	609.6	914.4	616.0	76.20	114.3	701.5	692.2		47.80	812.8	

Notes

- Weights are based on manufacturer's data and are approximate.
- For ring joint facings see page 8-6.
- For tolerances see page 8-4.

Slip On Flanges - ANSI B16.5



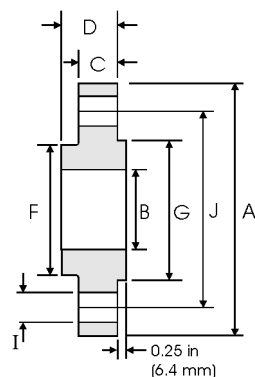
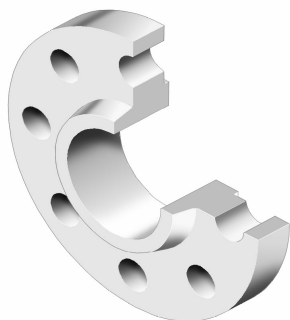
Class 600 lb

Nominal Pipe Size	Pipe	Flange Data				Hub	Raised Face	Drilling Data			Weight
		A	B	C	D	F	G	H	I	J	
	Outside Diameter	Overall Diameter	Inside Diameter	Flange Thickness min	Overall Length	Hub Diameter	Face Diameter	Number of Holes	Bolt Hole Diameter	Diameter of Circle of Holes	kg/ piece
	in mm	in mm	in mm	in mm	in mm	in mm	in mm		in mm	in mm	
1/2	0.840	3.750	0.880	0.560	0.880	1.500	1.380	4	0.620	2.620	0.74
	21.30	95.30	22.40	14.20	22.40	38.10	35.10		15.70	66.55	
3/4	1.050	4.620	1.090	0.620	1.000	1.880	1.690	4	0.750	3.250	1.27
	26.70	117.3	27.70	15.70	25.40	47.80	42.90		19.10	82.60	
1	1.315	4.880	1.360	0.690	1.060	2.120	2.000	4	0.750	3.500	1.52
	33.40	124.0	34.50	17.50	26.90	53.80	50.80		19.10	88.90	
1 1/4	1.660	5.250	1.700	0.810	1.120	2.500	2.500	4	0.750	3.880	2.03
	42.20	133.4	43.20	20.60	28.40	63.50	63.50		19.10	98.60	
1 1/2	1.900	6.120	1.950	0.880	1.250	2.750	2.880	4	0.880	4.500	2.96
	48.30	155.4	49.50	22.40	31.75	69.85	73.15		22.40	114.3	
2	2.375	6.500	2.440	1.000	1.440	3.310	3.620	8	0.750	5.000	3.62
	60.30	165.1	62.00	25.40	36.60	84.10	91.90		19.10	127.0	
2 1/2	2.875	7.500	2.940	1.120	1.620	3.940	4.120	8	0.880	5.880	5.28
	73.00	190.5	74.70	28.40	41.10	100.1	104.6		22.40	149.4	
3	3.500	8.250	3.570	1.250	1.810	4.620	5.000	8	0.880	6.620	7.00
	88.90	209.6	90.70	31.75	46.00	117.3	127.0		22.40	168.1	
3 1/2	4.000	9.000	4.070	1.380	1.940	5.250	5.500	8	1.000	7.250	8.84
	101.6	228.6	103.4	35.10	49.30	133.4	139.7		25.40	184.2	
4	4.500	10.75	4.570	1.500	2.120	6.000	6.190	8	1.000	8.500	14.5
	114.3	273.1	116.1	38.10	53.80	152.4	157.2		25.40	215.9	
5	5.563	13.00	5.660	1.750	2.380	7.440	7.310	8	1.120	10.50	24.4
	141.3	330.2	143.8	44.50	60.45	189.0	185.7		28.40	266.7	
6	6.625	14.00	6.720	1.880	2.620	8.750	8.500	12	1.120	11.50	28.7
	168.3	355.6	170.7	47.80	66.55	222.3	215.9		28.40	292.1	
8	8.625	16.50	8.720	2.190	3.000	10.75	10.62	12	1.250	13.75	43.4
	219.1	419.1	221.5	55.60	76.20	273.1	269.7		31.75	349.3	
10	10.75	20.00	10.88	2.500	3.380	13.50	12.75	16	1.380	17.00	70.3
	273.0	508.0	276.3	63.50	85.90	342.9	323.9		35.10	431.8	
12	12.75	22.00	12.88	2.620	3.620	15.75	15.00	20	1.380	19.25	84.2
	323.8	558.8	327.1	66.55	91.90	400.1	381.0		35.10	489.0	
14	14.00	23.75	14.14	2.750	3.690	17.00	16.25	20	1.500	20.75	98.7
	355.6	603.3	359.1	69.85	93.70	431.8	412.8		38.10	527.1	
16	16.00	27.00	16.16	3.000	4.190	19.50	18.50	20	1.620	23.75	142
	406.4	685.8	410.5	76.20	106.4	495.3	469.9		41.10	603.3	
18	18.00	29.25	18.18	3.250	4.620	21.50	21.00	20	1.750	25.75	173
	457.2	743.0	461.8	82.60	117.3	546.1	533.4		44.50	654.1	
20	20.00	32.00	20.20	3.500	5.000	24.00	23.00	24	1.750	28.50	220
	508.0	812.8	513.1	88.90	127.0	609.6	584.2		44.50	723.9	
24	24.00	37.00	24.25	4.000	5.500	28.25	27.25	24	2.000	33.00	312
	609.6	939.8	616.0	101.6	139.7	717.6	692.2		50.80	838.2	



Notes

- Weights are based on manufacturer's data and are approximate.
- For ring joint facings see page 8-6.
- For tolerances see page 8-4.

Slip On Flanges - ANSI B16.5



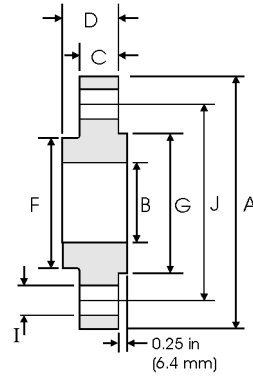
Class 900 lb

Pipe		Flange Data				Hub	Raised Face	Drilling Data			Weight
Nominal Pipe Size		A	B	C	D	F	G	H	I	J	
	Outside Diameter	Overall Diameter	Inside Diameter	Flange Thickness min	Overall Length	Hub Diameter	Face Diameter	Number of Holes	Bolt Hole Diameter	Diameter of Circle of Holes	kg/ piece
	in mm	in mm	in mm	in mm	in mm	in mm	in mm		in mm	in mm	
1/2	0.840 21.30	4.750 120.6	0.880 22.40	0.880 22.40	1.250 31.70	1.500 38.10	1.380 35.10	4	0.880 22.40	3.250 82.50	1.74
3/4	1.050 26.70	5.120 130.0	1.090 27.70	1.000 25.40	1.380 35.00	1.750 44.40	1.690 42.90	4	0.880 22.40	3.500 88.90	2.34
1	1.315 33.40	5.880 149.3	1.360 34.50	1.120 28.40	1.620 41.10	2.060 52.30	2.000 50.80	4	1.000 25.40	4.000 101.6	3.44
1 1/4	1.660 42.20	6.250 158.7	1.700 43.20	1.120 28.40	1.620 41.10	2.500 63.50	2.500 63.50	4	1.000 25.40	4.380 111.2	3.91
1 1/2	1.900 48.30	7.000 177.8	1.950 49.50	1.250 31.70	1.750 44.50	2.750 69.85	2.880 73.15	4	1.120 28.40	4.880 123.9	5.36
2	2.375 60.30	8.500 215.9	2.440 62.00	1.500 38.10	2.250 57.15	4.120 104.6	3.620 91.90	8	1.000 25.40	6.500 165.1	9.85
2 1/2	2.875 73.00	9.620 244.3	2.940 74.70	1.620 41.10	2.500 63.50	4.880 123.9	4.120 104.6	8	1.120 28.40	7.500 190.5	13.7
3	3.500 88.90	9.500 241.3	3.570 90.70	1.500 38.10	2.120 53.80	5.000 127.0	5.000 127.0	8	1.000 25.40	7.500 190.5	11.6
4	4.500 114.3	11.50 292.1	4.570 116.1	1.750 44.40	2.750 69.85	6.250 158.7	6.190 157.2	8	1.250 31.70	9.250 234.9	19.7
5	5.563 141.3	13.75 349.2	5.660 143.8	2.000 50.80	3.120 79.25	7.500 190.5	7.310 185.7	8	1.380 35.00	11.00 279.4	31.9
6	6.625 168.3	15.00 381.0	6.720 170.7	2.190 55.60	3.380 85.80	9.250 234.9	8.500 215.9	12	1.250 31.70	12.50 317.5	41.1
8	8.625 219.1	18.50 469.9	8.720 221.5	2.500 63.50	4.000 101.6	11.75 298.4	10.62 269.7	12	1.500 38.10	15.50 393.7	70.7
10	10.75 273.0	21.50 546.1	10.88 276.3	2.750 69.85	4.250 107.9	14.50 368.3	12.75 323.9	16	1.500 38.10	18.50 469.9	101
12	12.75 323.8	24.00 609.6	12.88 327.1	3.120 79.25	4.620 117.3	16.50 419.1	15.00 381.0	20	1.500 38.10	21.00 533.4	133
14	14.00 355.6	25.25 641.3	14.14 359.1	3.380 85.80	5.120 130.0	17.75 450.8	16.25 412.8	20	1.620 41.10	22.00 558.8	153
16	16.00 406.4	27.75 704.8	16.16 410.5	3.500 88.90	5.250 133.3	20.00 508.0	18.50 469.9	20	1.750 44.40	24.25 615.9	185
18	18.00 457.2	31.00 787.4	18.18 461.8	4.000 101.6	6.000 152.4	22.25 565.1	21.00 533.4	20	2.000 50.80	27.00 685.8	258
20	20.00 508.0	33.75 857.2	20.20 513.1	4.250 107.9	6.250 158.7	24.50 622.3	23.00 584.2	20	2.120 53.80	29.50 749.3	317
24	24.00 609.6	41.00 1041.4	24.25 616.0	5.500 139.7	8.000 203.2	29.50 749.3	27.25 692.2	20	2.620 66.55	35.50 901.7	606



Notes

- Weights are based on manufacturer's data and are approximate.
- For ring joint facings see page 8-6.
- For tolerances see page 8-4.

Slip On Flanges - ANSI B16.5



Class 1500 lb

Pipe		Flange Data				Hub	Raised Face	Drilling Data			Weight
Nominal Pipe Size		A	B	C	D	F	G	H	I	J	
	Outside Diameter	Overall Diameter	Inside Diameter	Flange Thickness min	Overall Length	Hub Diameter	Face Diameter	Number of Holes	Bolt Hole Diameter	Diameter of Circle of Holes	kg/ piece
	in mm	in mm	in mm	in mm	in mm	in mm	in mm		in mm	in mm	
1/2	0.840	4.750	0.880	0.880	1.250	1.500	1.380	4	0.880	3.250	1.74
	21.30	120.6	22.40	22.40	31.70	38.10	35.10		22.40	82.50	
3/4	1.050	5.120	1.090	1.000	1.380	1.750	1.690	4	0.880	3.500	2.34
	26.70	130.0	27.70	25.40	35.00	44.40	42.90		22.40	88.90	
1	1.315	5.880	1.360	1.120	1.620	2.060	2.000	4	1.000	4.000	3.44
	33.40	149.3	34.50	28.40	41.10	52.30	50.80		25.40	101.6	
1 1/4	1.660	6.250	1.700	1.120	1.620	2.500	2.500	4	1.000	4.380	3.91
	42.20	158.7	43.20	28.40	41.10	63.50	63.50		25.40	111.2	
1 1/2	1.900	7.000	1.950	1.250	1.750	2.750	2.880	4	1.120	4.880	5.36
	48.30	177.8	49.50	31.70	44.50	69.85	73.15		28.40	123.9	
2	2.375	8.500	2.440	1.500	2.250	4.120	3.620	8	1.000	6.500	9.85
	60.30	215.9	62.00	38.10	57.15	104.6	91.90		25.40	165.1	
2 1/2	2.875	9.620	2.940	1.620	2.500	4.880	4.120	8	1.120	7.500	13.7
	73.00	244.3	74.70	41.10	63.50	123.9	104.6		28.40	190.5	

Notes

- Weights are based on manufacturer's data and are approximate.
- For ring joint facings see page 8-6.
- For tolerances see page 8-4.